



Improve surface finish and dimensional accuracy

Reduce vibration & chatter

Avoid cost intensive bearing damages

Reduce wear on tool and spindle bearings

Complies with spindle manufacturer warranty specifications

Balancing Machine for Tools and Toolholders

Tooldyne SV

Demanding more from machine tools - higher speed, higher accuracy, better quality - has led to extraordinary advancements in machining technology, where capabilities once only imagined have now become industry standards. But, while today's high speed machines offer impressive advantages, accuracy requirements are only possible if tool, toolholder and spindle are precision balanced.

As operating speeds increase, forces resulting from unbalance cause non-symmetrical rotation. The result is harmful vibration, increased chatter, poor surface finish, and excessive wear on the tool and spindle bearings. As we continue to expand today's production capabilities and go beyond the quality standards that our customers expect, precision balancing becomes even more essential.

The Tooldyne SV is specifically designed to provide precision results in the shortest amount of time for a wide range of tools and toolholders. A pneumatically actuated "quick change" mechanism automatically draws the tool into the spindle to accurately simulate operating conditions and provide the repeatable fit necessary for precision balancing.

Count on the Tooldyne SV for balancing that is simple, swift and cost-effective!

Important data at a glance			
Max. tool length (incl. adapter)	mm		400
Max. tool diameter	mm		350
Max. tool weight	kg		30
Dimension (without PC) WxHxD	mm		500 x 1 500 x 820
Spindle speed	min ⁻¹		300 - 1,100
Measuring accuracy per plane	gmm		< 0.5
Power requirements			230 V, 50/60 Hz
Air requirement	bar		6

Features

- Easy to use balancing program that provides precision results with little operator training.
- Automatic in-tolerance indication by quality grade.
- Vertically mounted, hard bearing design with permanent calibration.
- Pneumatically activated "quick change" clamping system for reproducible tool location.
- Clamping adapters for taper **SK** (with and without retention knob) and hollow taper shanks **HSK**
- Single and two-plane balancing capability. 95% unbalance reduction ratio.

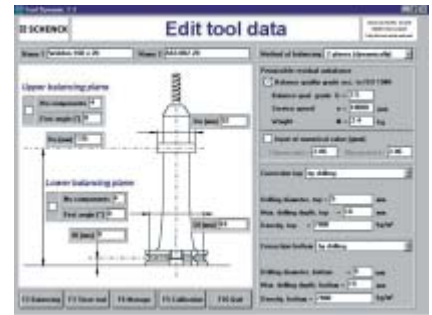
Options

- Indexing indication to pinpoint correction location with laser marking.



- Windows-based PC with balancing software, monitor, keyboard, mouse and printer interface. Data storage for up to 5000 rotor files
- Automatic indexing of correction location
- Unbalance correction by drilling, milling, balancing rings and weights
- User's guide in various languages

- The handling of the basic machine is effected by a keyboard with integrated LCD display. Handling by a PC with keyboard and bigger screen makes balancing even faster and saver.



Insertion of tool data



Measuring result

SCHENCK

**Balancing and
Diagnostic Systems**

SCHENCK RoTec GmbH
Landwehrstraße 55
D-64293 Darmstadt

Tel.: +49 (0) 61 51 - 32 23 11
Fax: +49 (0) 61 51 - 32 23 15
eMail: rotec@schenck.net

Make use of our worldwide distribution network.
Please see us at <http://www.schenck-rotec.com>

The **DÜRR** Group