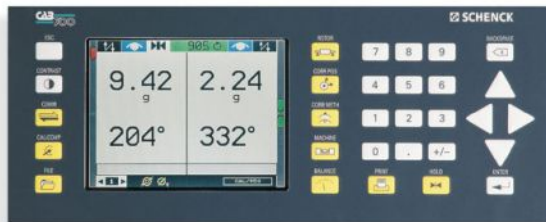


Modernisation package CAB 700 For horizontal and vertical universal balancing machines



- Understandable dialogues, clear user guidance – menu-controlled via numeric keyboard and cursor keys
- Low number of screens for the balancing process
- Function keys for direct entry on the measuring device
- Colour, graphics-capable LCD display
- Suitable for all common correction procedures: drilling, milling, fitting of weights

Range of application

Performance capability is not a question of size. The microprocessor measuring device CAB 700 has been designed for universal tasks. It combines in compact form the requirements which really matter when it comes to universal balancing machines: ease of operation, accurate and quicker unbalance measurement and high-performance correction software.

Functions

- Measuring of the dynamic unbalance in 2 planes, of the static unbalance and of the unbalance moment
- Automatic comparison of tolerance
- Display in polar coordinates
- Display in evenly or unevenly distributed components
- Averaging of measured values versus time, rotor-type related
- Balancing protocol (series or single)
- Single compensation, key compensation, index balancing
- Drive control for automatic measuring procedure
- Calculation of tolerance according to DIN/ISO 1940
- Automatic self-test

- Data storage of up to 100 different rotor types
- Powerful, fully digital unbalance signal processing

Speed range

120 to 5.000 rpm

Delivery contents (Extract)

- Measuring unit CAB 700 mounted into a housing for mounting on existing control cabinets
- Measuring modul MCP 700 for connection of vibration pickups and reference sensor
- Power supply module
- Cable set for actual Schenck „plug system 3“
- Adapter cable from actual Schenck „plug system 3“ to „plug system 1“
- Technical documentation on CD-ROM with operator manual of the measuring unit CAB 700 and electrical connection plan, adapted to the existing machine (as far as possible)

For machines with belt drive

- Optical reference sensor SR 19 for scanning reflective angle reference marks

A large industrial balancing machine with a prominent rotating drum and various mechanical components, set in a factory environment.

Modernisation package CAB 700 For horizontal and vertical universal balancing machines

- Cable set for reference sensor
- 3 m signal cable & 4 m control cable for connection to the existing drive controls

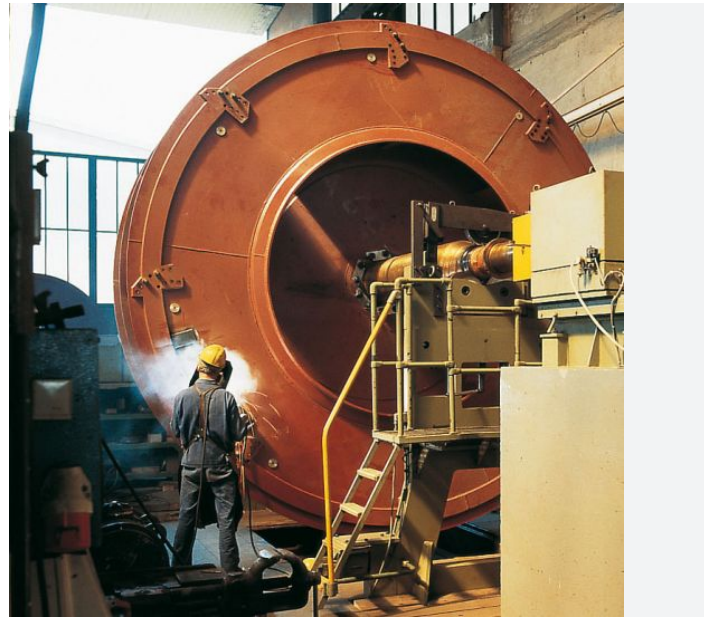
Further hardware and software delivery options and prices available on request.

Price
from EUR 6,500 up

Modernisation package CAB 700 For horizontal and vertical universal balancing machines



Balancing made simple with CAB 700, irrespective of whether the rotor is small or large.



Balancing made simple with CAB 700, irrespective of whether the rotor is small or large.

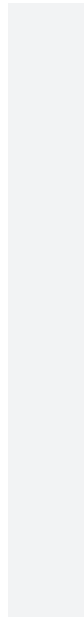
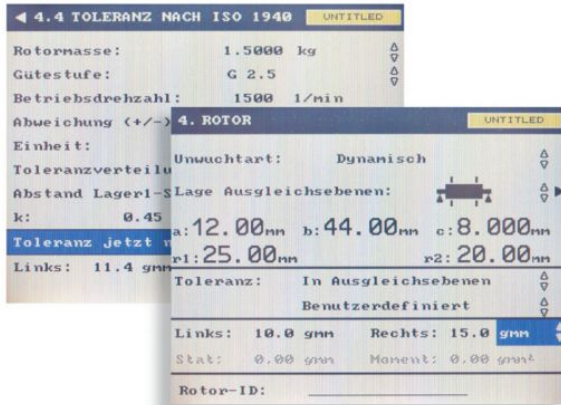


Horizontal and vertical: The right solution for every type of balancing machine



Horizontal and vertical: The right solution for every type of balancing machine

Modernisation package CAB 700 For horizontal and vertical universal balancing machines



Automatic calculation of the unbalance tolerances as per ISO 1940;
Set-up of the measuring unit for a new rotor type by means of clear dialog screens

Measuring unit CAB 700 mounted into housing for mounting on existing control cabinets

Modernisation package CAB 700 For horizontal and vertical universal balancing machines

Technical data at a glance

Application	Universal for horizontal or vertical balancing machines, hard-bearing and soft-bearing
Basic system	Modular and easy-maintenance design, with measuring, evaluation and display units. Data editing and calculation by means of Schenck Computer Aided Balancing software
	* Measuring of the dynamic unbalance in 2 planes, of the static unbalance and of the unbalance moment
	* Automatic comparison of tolerance
	* Display in polar coordinates
	* Display in evenly or unevenly distributed components
	* Averaging of measured values versus time, rotor-type related
	* Single compensation, key compensation, index balancing
	* Balancing protocol (series or single)
	* Drive control for automatic measuring procedure
	* Automatic self-test
Dialogue languages	English, German, French, Italian, Spanish, Swedish, Dutch (other languages upon request)
Display	Graphic compatible color LCD, resolution 320 x 240 pixel for clear graphical representation and smooth reading
Keyboard	Sturdy keyboard for direct access to all important operational functions
Measuring procedure	Powerful, fully digital unbalance signal processing for utmost measuring accuracy
Unbalance measuring range	1:1,000,000
Speed range	120 to 5,000 rpm
Data storage	Up to 100 rotor data sets
Interfaces	RS 232 C for Printer, RS 232 C for Computer, CAN bus (machine controls), Profibus and Interbus S (optional)
	* Printer
	* Angular indexing on the LCD display
	* Calculation of tolerance according to DIN/ISO 1940
	* Drive system control for automatic indexing
	* Rotor specific calibration
	* CAB connect
	* SPC statistic software
	* Extensive correction software e. g. for drilling, milling
	* Calculating correction in number or length of specified material
	* Additional operating unit located up to 10 m away
Power supply	115 â 230 V, 50 â 60 Hz (automatic adjustment)
Weight	approx. 5 kg

A large industrial machine, likely a balancing machine, is shown in a factory setting. It has a large, cylindrical, metallic component with a textured surface. The machine is illuminated with blue light.

Modernisation package CAB 700
For horizontal and vertical universal balancing machines
